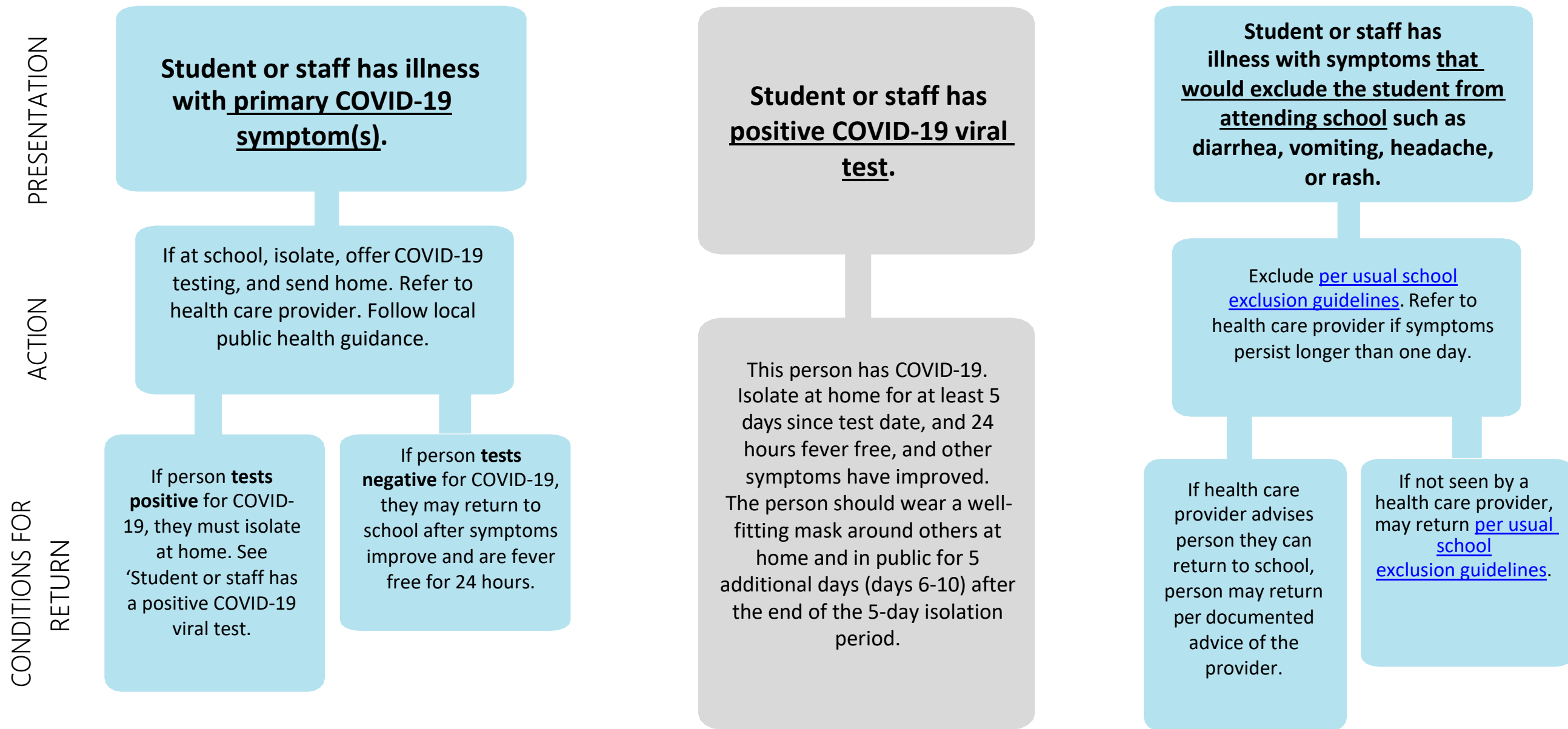


# COVID-19 Exclusion Summary Guidance for K-12

Version 3/9/2022



See [Communicable Disease guidance for Schools](#) for recommendations on disease-specific guidelines.

See "[Planning for COVID-19 Scenarios in Schools](#)" for additional scenario guidance.

## Important Definitions

**Exclusion** means keeping a student with certain contagious disease or symptoms out of school to prevent possible disease spread (determined by school administrator).

**Fever free** means a temperature less than 100.4°F without the use of fever-reducing medication.

## Exclude any individual with these symptoms of illness:

- Cough\*
- Temperature of 100.4°F or higher or chills\*
- Shortness of breath or difficulty breathing\*
- New loss of taste or loss of smell\*

\* Notes primary COVID-19 symptom

## Exclude from school anyone with these symptoms of illness:

- Diarrhea
- Vomiting
- Skin rash or open sores
- Red eyes with eye discharge
- Jaundice